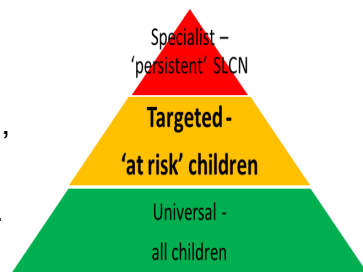


# Speech, Language and Communication Need: Prevention & Early Intervention

## Why are we focusing on children’s Speech, Language and Communication skills?

We know that around 50% of children in Salford will need support with their Speech, Language and Communication skills . Some will need longer term support (10%). Others will need a ‘boost’ (40%) .



**Our vision:** All children living in Salford to have good language and communication skills so they can make friends, learn and thrive.

## Who are we helping?

- Any child living in Salford under the age of 5 years can have their communication skills checked to see how they are developing.
- All children can develop their language and communication skills at different times. Some children will benefit from an extra boost to help them. We want to make sure children get this boost early so that they are ready to make friends and learn at school.
- This group of children are the ‘amber’ group in the diagram. The ‘red’ are those children who need more help with their Speech, Language and Communication skills. They may benefit from help from the Speech and Language Therapy service.

## How will we do this?

- A range of Early Years workers across Salford have been given training in language and communication development.
- To help them identify children with language and communication needs they have been given a screening tool called WellComm.

## What happens after the screen?

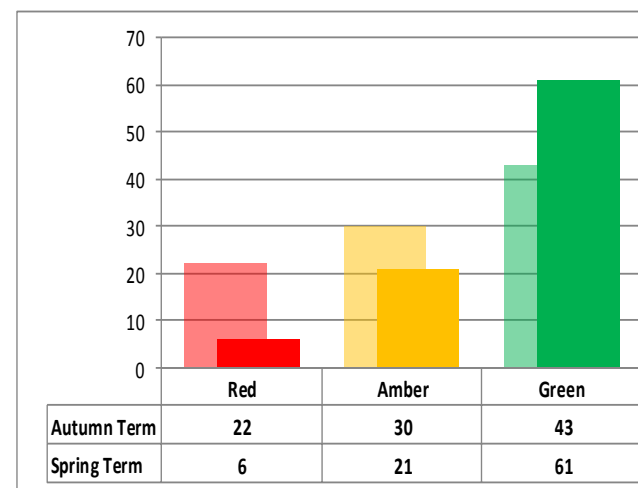
- Once information on a child’s language and communication skills has been obtained they can access this ‘boost’ of support to develop their skills.
- The support can include some activities which can be completed at home or in their nursery
- Children and their parents or carers can also attend a Talking Tots group in the community

## Where are the WellComm screens?

- Health Visiting teams at a child’s 2 year check
- A child’s Early Years setting — nursery or childminder
- Early Help Practitioners in the Early Help Hubs



## What impact are we seeing?



Over 4000 children across Salford have had their communication needs identified and supported.

The graph shows the increase in children scoring ‘green’ in a Salford setting following targeted language and communication support..